

Paragon Networks - Pre Terminated Fibre Optic Cable Assembly Handling and Installation Instructions

Non-reeled Assemblies

Incorrect method of de-coiling

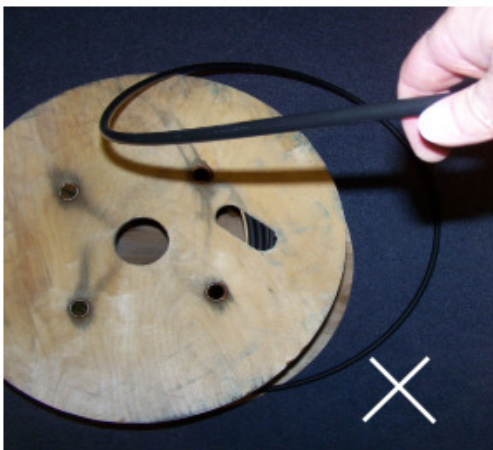


Correct method of de-coiling



Reeled Assemblies

Incorrect method of de-coiling



Correct method of de-coiling



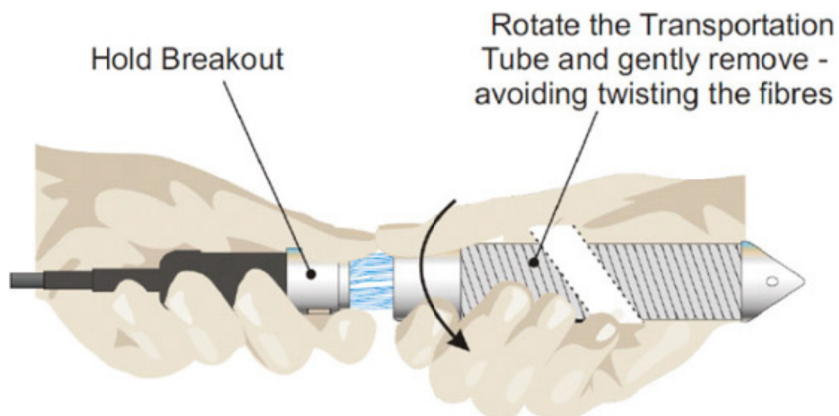
1. Pre-Term Fibre Installation

Your Pre terminated assembly will arrive on a drum or without a reel if it is a shorter assembly. It is very important to ensure you follow the correct methods of de-coiling to minimise the risk of damage by exceeding the cable's minimum bend radius and strain (tensile strength) requirements.

2. Removing of Tubes

After the fibre optic cable has been installed and positioned, the next task is to remove the Protective Tube. It's very important to avoid twisting of the fibres within the Breakout Kit and the Tube when disassembling, as excessive strain can lead to damage of the fibre core within the assembly, potentially leading to a breakage.

By gripping the Breakout Assembly when untwisting the tube no torque is exerted on the cable entering it. There is no need to use any tools on these parts, they should be hand tight.



3. Insert into Containment

If you are using a fibre patch panel or a break out box these will have knock outs/entry holes. Feed the loose tails through the entry hole (20mm for most pre terms) as per the image below. Then slide the gland nut over the tails and screw against the thread of the gland which should be pushed through the hole.



4. Connect

Lastly the fibre connector dust caps can be removed, but only immediately before inserting into the fibre adapters (or equipment if directly attaching). The ferrule end faces should never be touched to avoid contamination or damage. It's good practice to clean end faces before every insertion.